

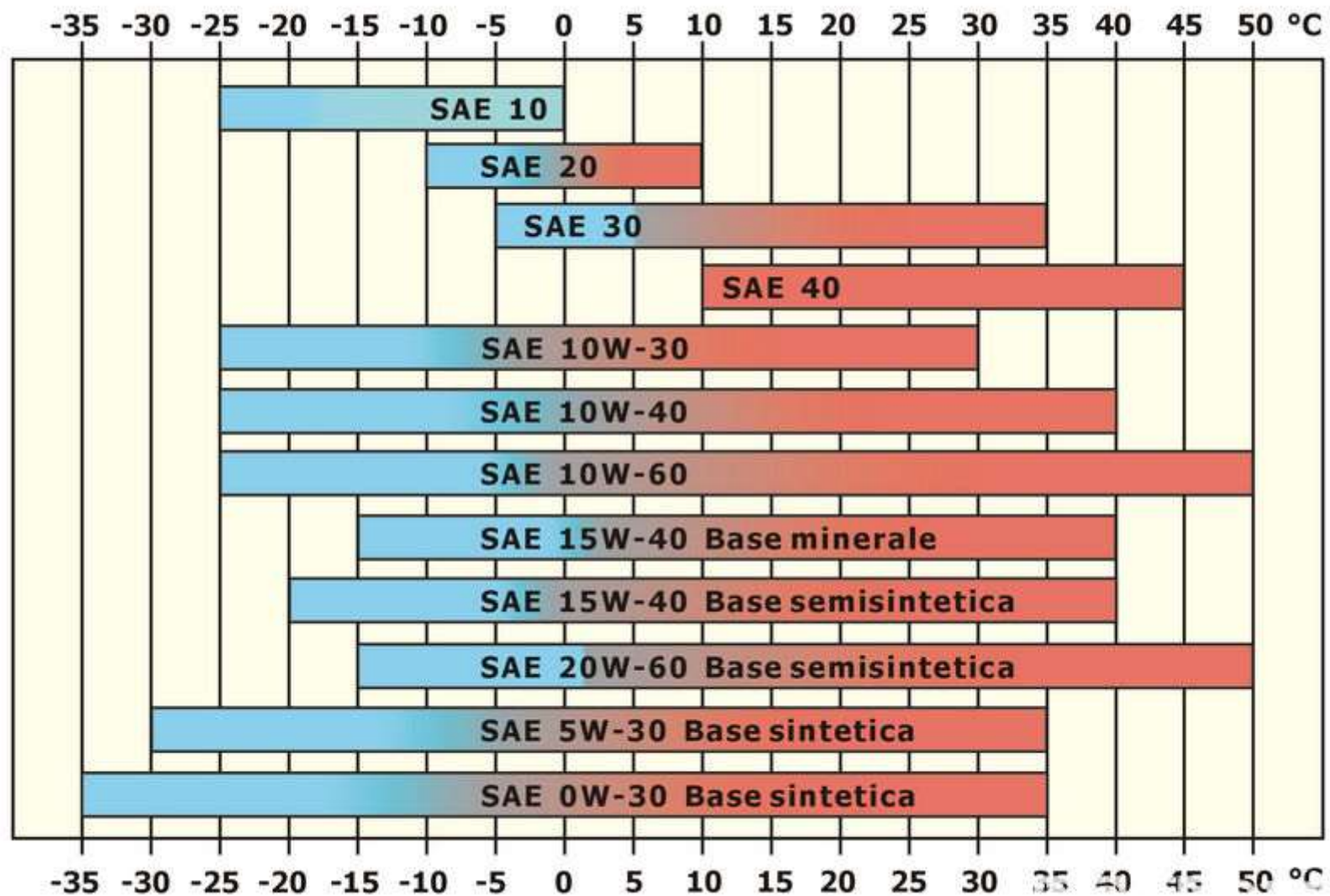
OLEODINAMICA

CENTRALINA OLEODINAMICA

CILINDRI OLEODINAMICI

VALVOLE DISTRIBUTRICI

Prof. Usai Massimiliano





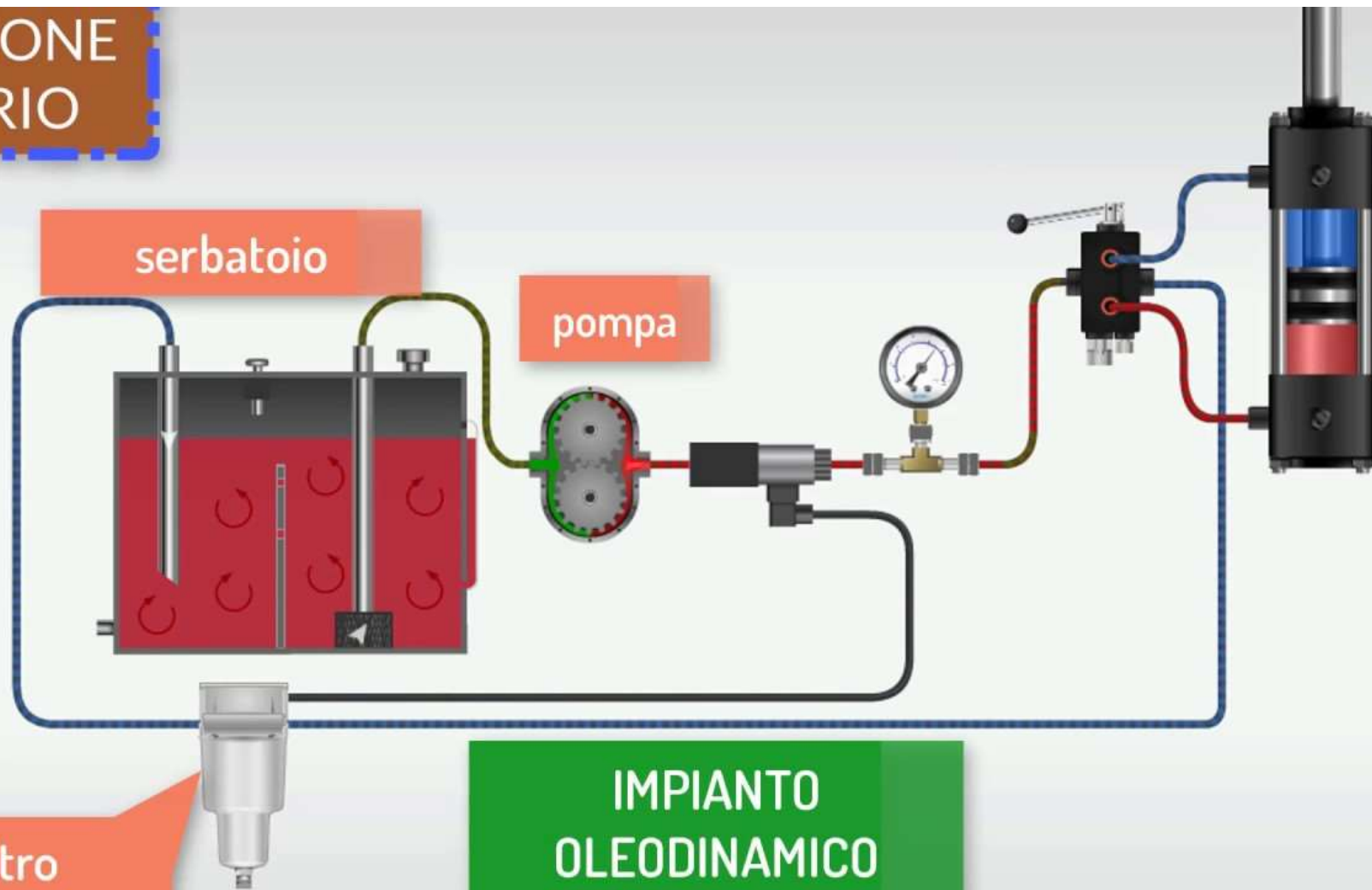
SIMONE  
ORIO

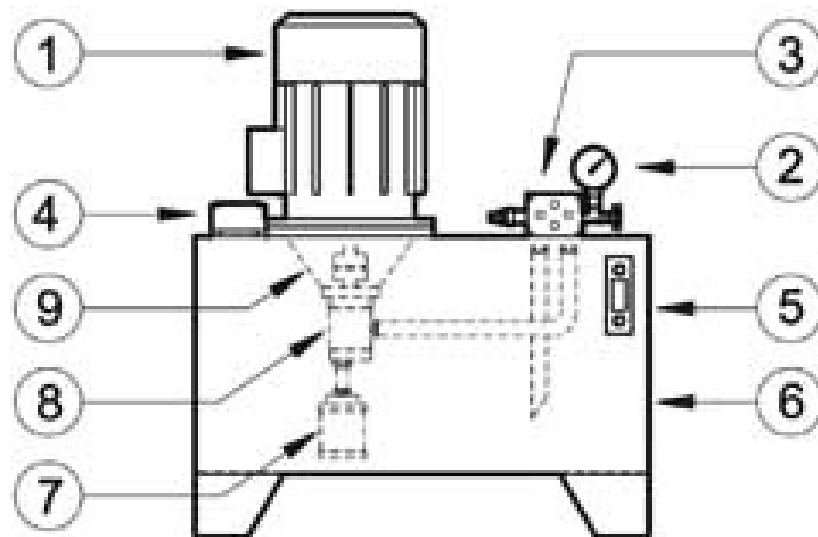
serbatoio

pompa

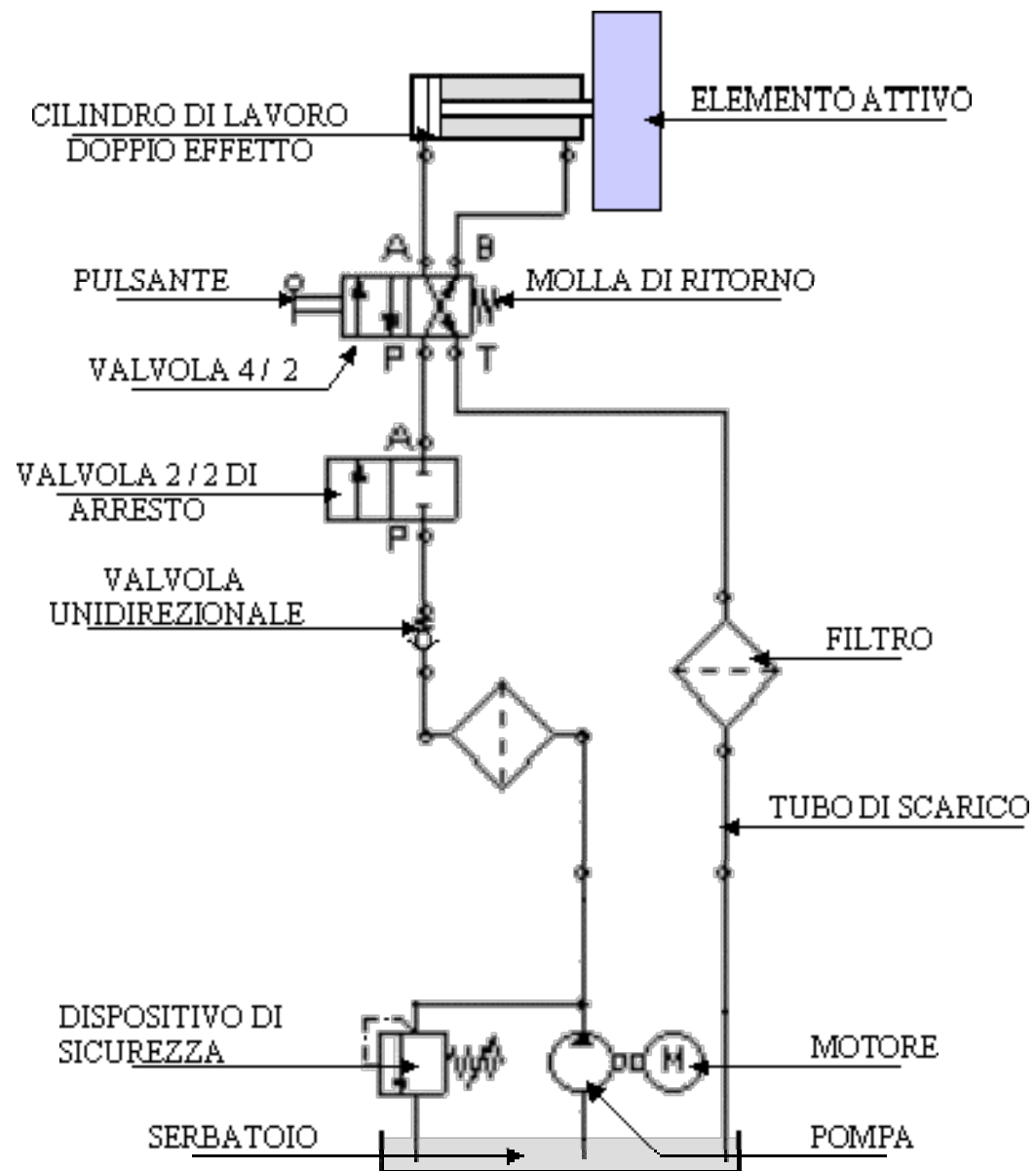
filtro

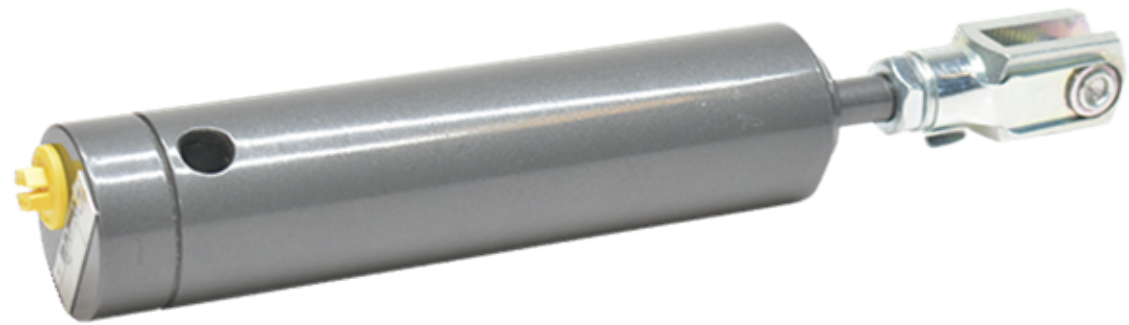
IMPIANTO  
OLEODINAMICO

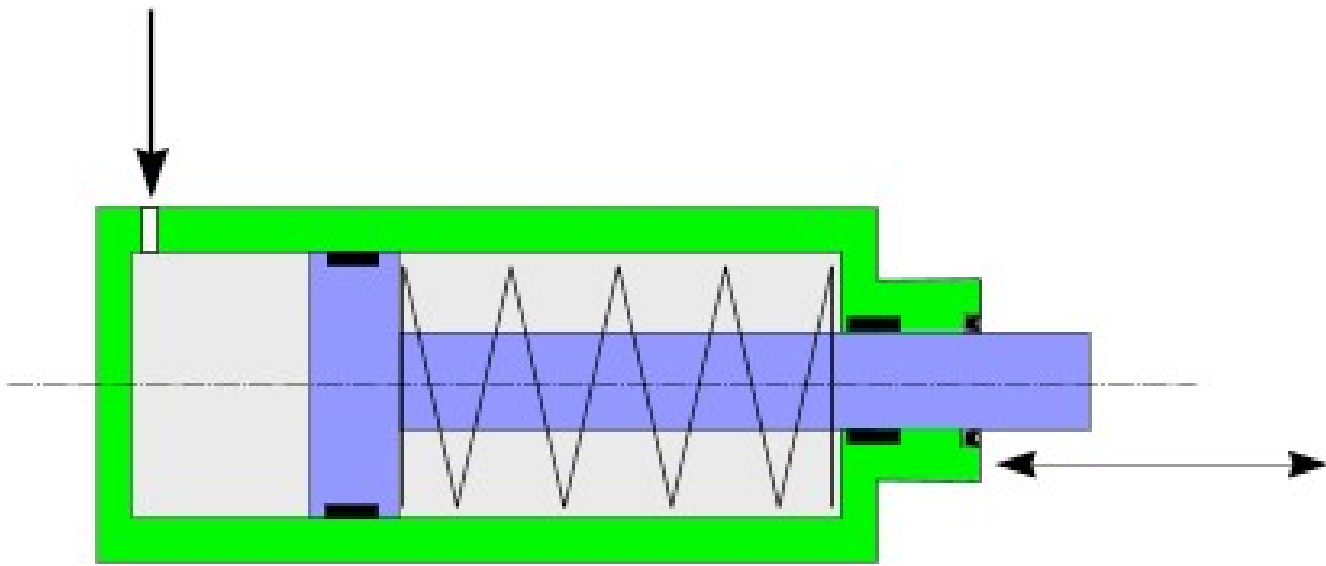




- 1) Motore elettrico
- 2) Manometro con esclusore
- 3) Valvola di massima pressione
- 4) Tappo di carico
- 5) Indicatore di livello
- 6) Serbatoio
- 7) Filtro in aspirazione
- 8) Pompa ad ingranaggi
- 9) Gruppo di collegamento motore - pompa

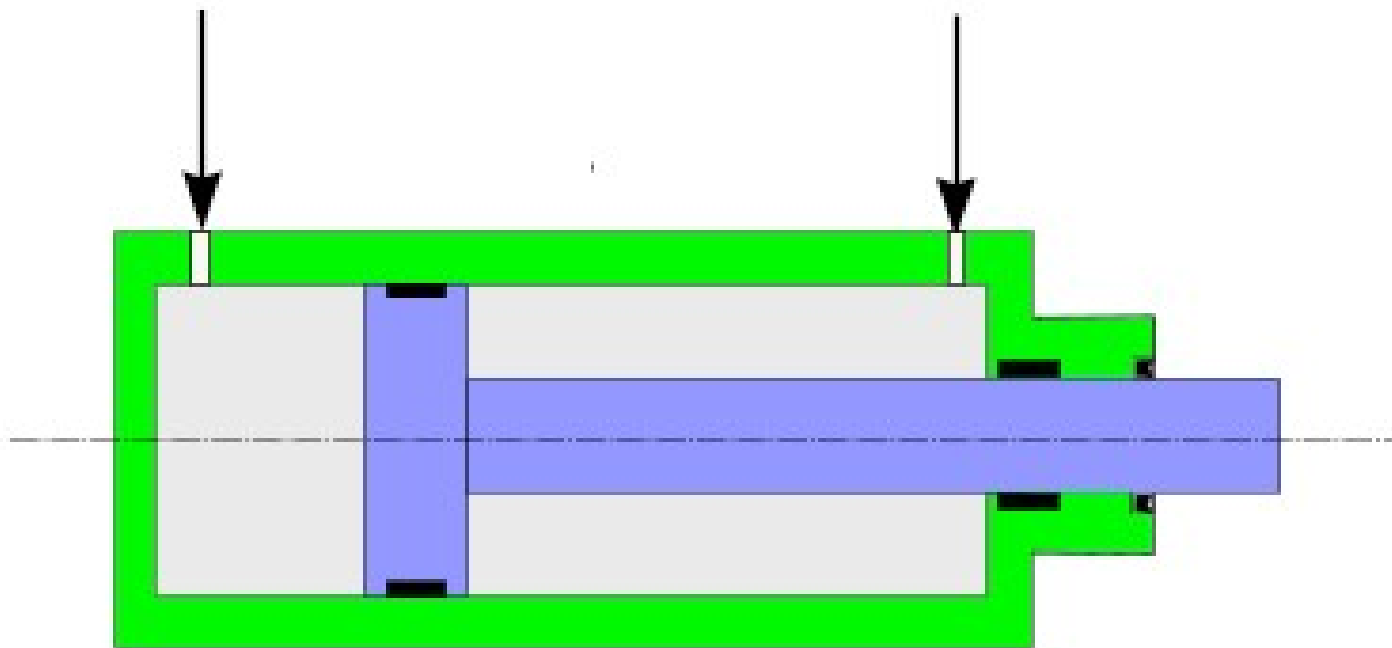


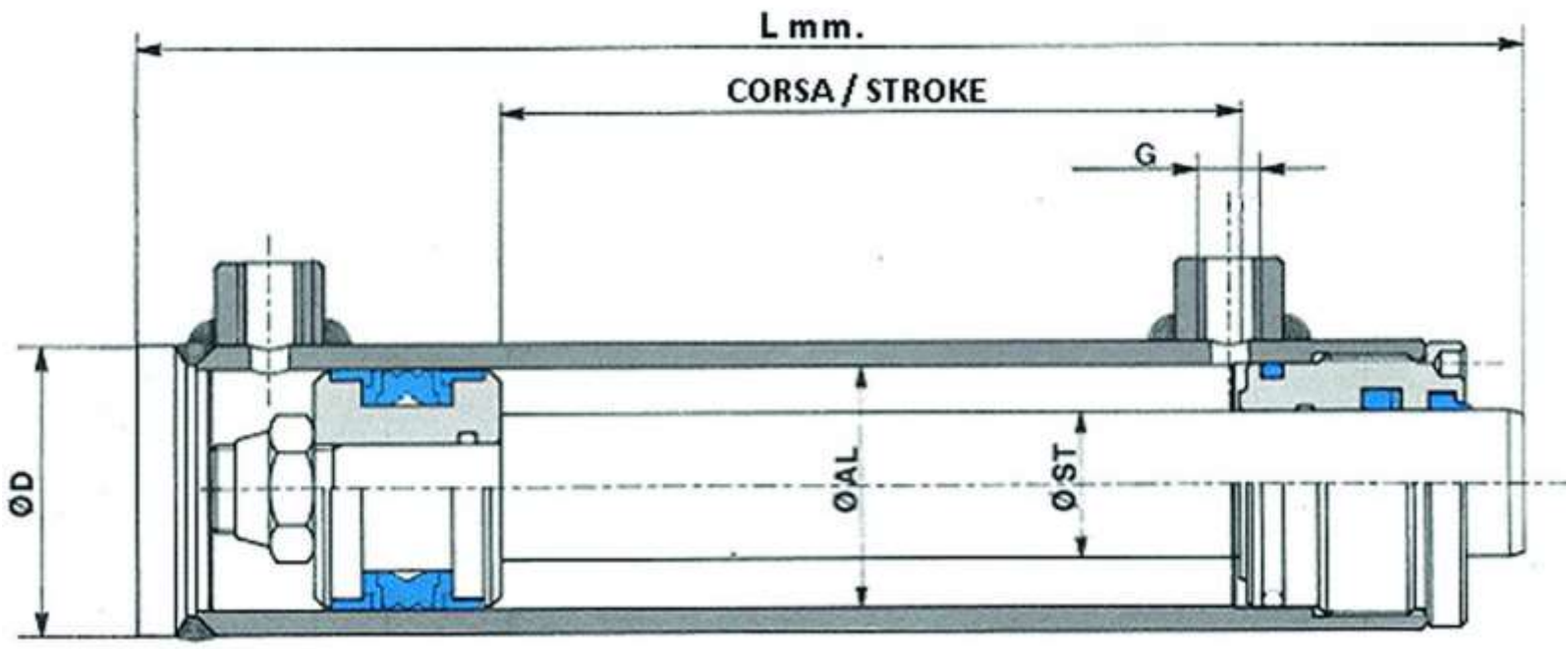








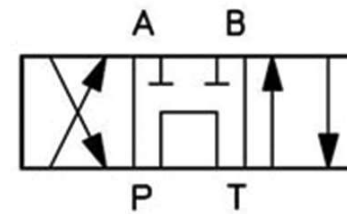


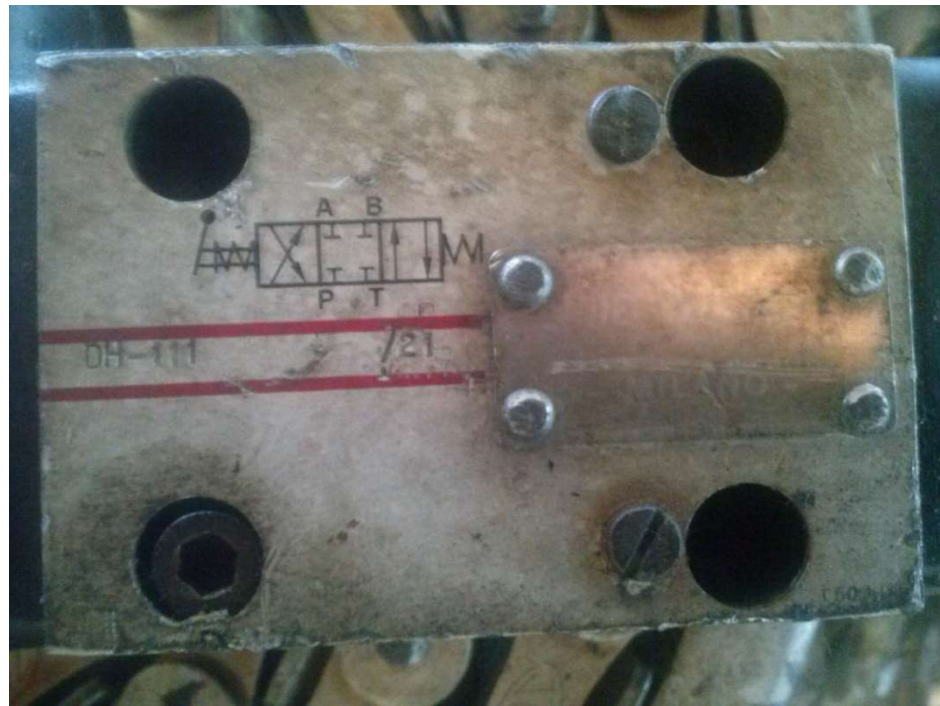




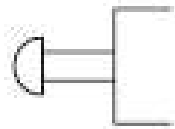


atos 

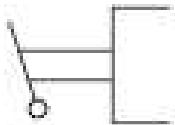




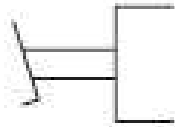
# AZIONAMENTI



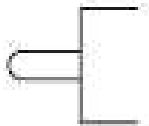
PULSANTE



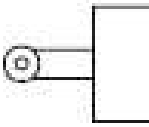
LEVA



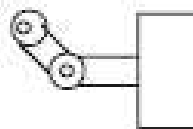
PEDALE



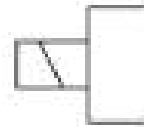
MECCANICO



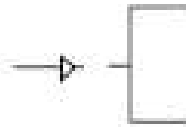
RULLO



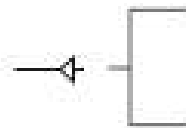
RULLO SNODATO



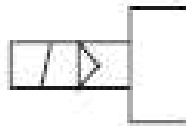
SOLENOIDE



PNEUMATICO  
A PRESSIONE



PNEUMATICO  
A DEPRESSIONE



ELETTROPNEUMATICO



MOLLA

